

GAUGE	COLOURS
2.0mm	16 ex stock
*1.5mm	10 ex stock
✓2.5mm, 3.0mm	7 ex stock

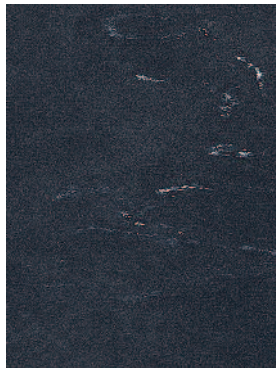
■ Dove White and Black Panther feature a traditional marbled decoration - they are not plain in terms of appearance.



LRV 74.8

NCS S 0804-Y70R

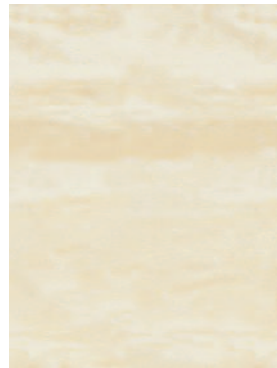
■ Dove White 8740 w/r 9520



LRV 5.5

NCS S 8502-R

■ Black Panther 8640* w/r 8640



LRV 55.3

NCS S 1510-Y30R

Oatmeal 9240 w/r 9240



LRV 39.7

NCS S 3005-Y50R

Nougat 9010*✓ w/r 9010



LRV 53.5

NCS S 2002-Y50R

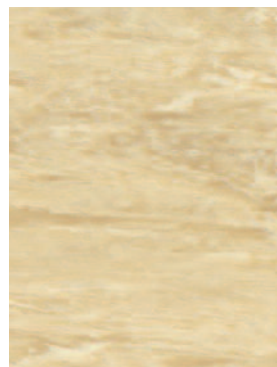
Polar Grey 9340*✓ w/r 9340



LRV 31.8

NCS S 4000-N

Slate Grey 9200*✓ w/r 9200



LRV 37.2

NCS S 3020-Y10R

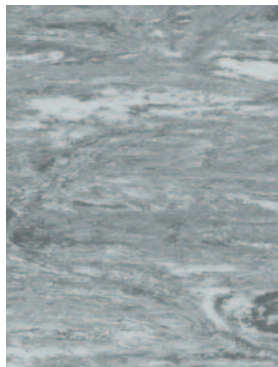
Desert Sand 9180* w/r 9180



LRV 39.7

NCS S 3010-Y30R

Mushroom 9110*✓ w/r 9110



LRV 27.5

NCS S 4502-G

Graphite 9120* w/r 9120



LRV 38.3

NCS S 3005-G20Y

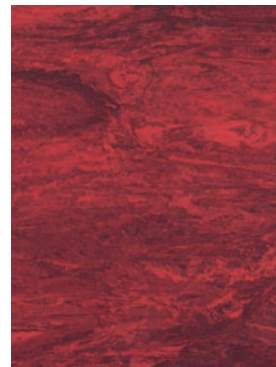
Sea Green 9190 w/r 9190



LRV 30.7

NCS S 3030-Y70R

Red Cedar 9300✓ w/r 9300



LRV 8.8

NCS S 5030-R

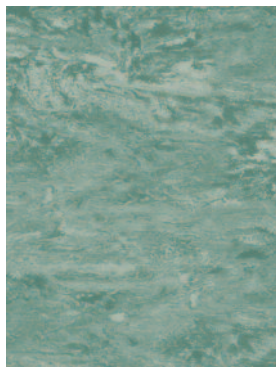
Black Cherry 8580 w/r 8580



LRV 32.2

NCS S 3020-G30Y

Eau de Nil 9080*✓ w/r 9080



LRV 25.3

NCS S 4010-G10Y

Conifer 9220* w/r 9220



LRV 19.3

NCS S 4030-B10G

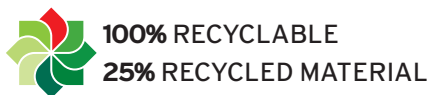
Venetian Blue 9040*✓ w/r 9040



LRV 23.4

NCS S 4020-R90B

Atlantic Blue 9170 w/r 9170



° Refer to BRE Global ratings on www.greenbooklive.com

The closest perceived NCS - Natural Colour System references are quoted for your convenience. For more information see www.ncscolour.com
Light Reflectance Values (LRV) - all colours are tested in accordance with BS8300:2009.